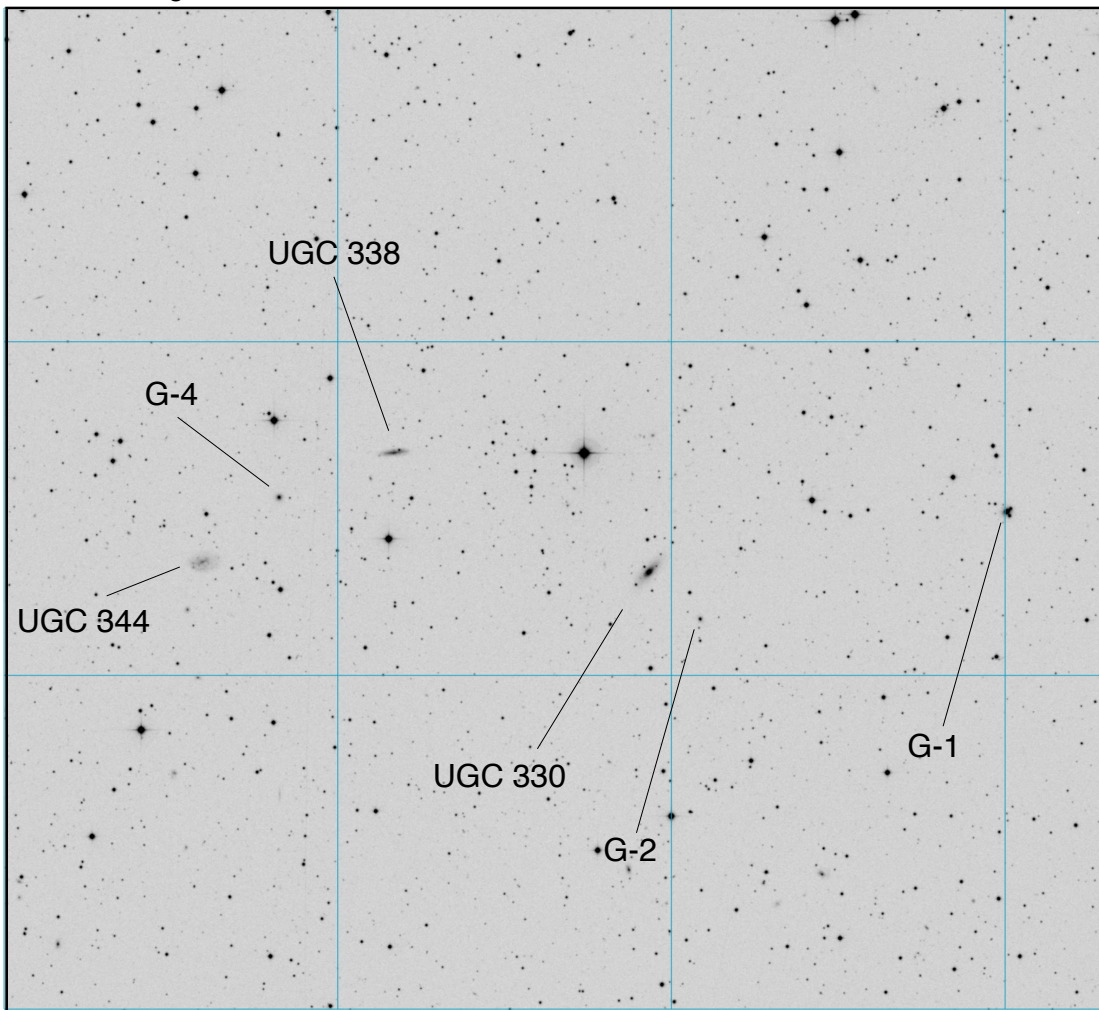


# M-31 Globular Clusters- Chart I

HBK 0-1 (G1)	00 32 46.9	+39 34 42	13.7v
HBK 0-2	00 33 33.9	+39 31 20	15.8v
HBK 0-4	00 34 39.5	+39 34 39	15.6v
Galaxies in the field:			
UGC 330	00 33 42.01	+39 32 40.0	14.8p 1.4'X0.5'
UGC 338	00 34 21.94	+39 36 03.5	15.5 1.0'X0.2'
UGC 344	00 34 51.31	+39 32 41.1	15.2p 1.2'X0.7'

30 x 60' image



Finder circles are 2° and 4.3°

