

# Charts for the “Summer Sky”

## Rob Hawley

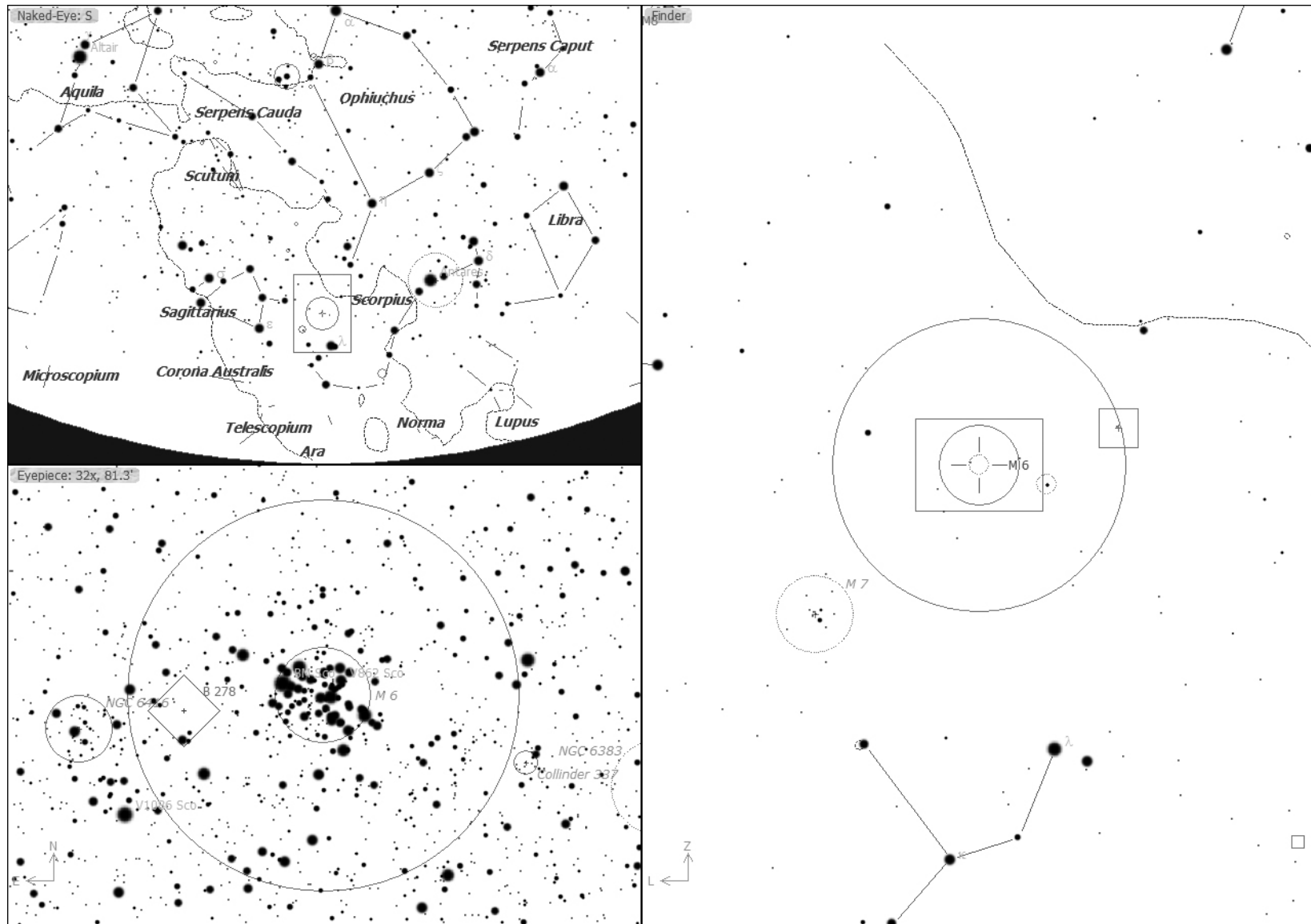
This series of charts shows the detailed location of the objects discussed in the movie.

For more information on using these charts please consult

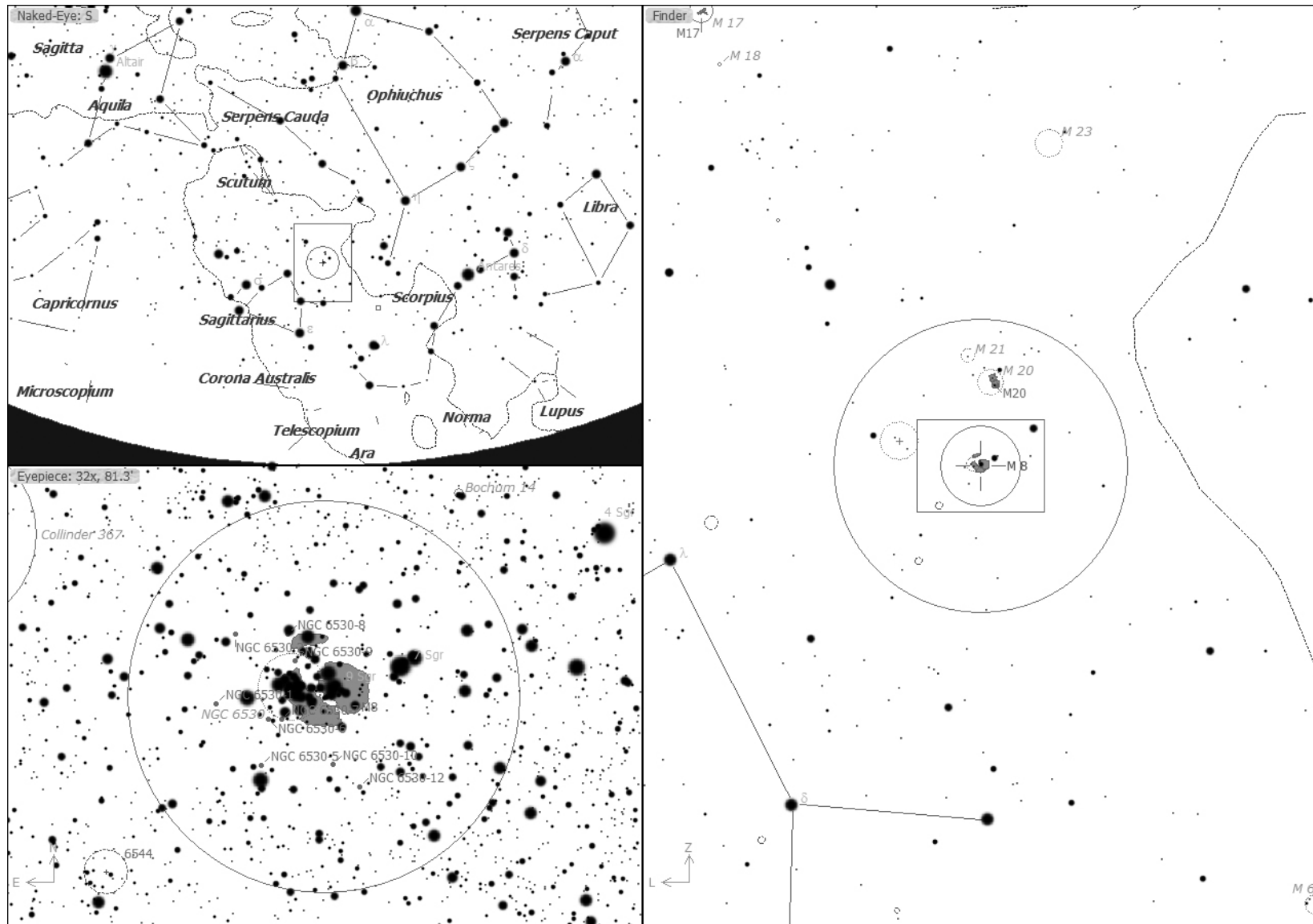
[www.robhawley.net/sh101](http://www.robhawley.net/sh101)

This charts are for the southern US on July 1 at midnight. For earlier times or dates the sky will be shifted east. For later times or dates the sky will be shifted west.

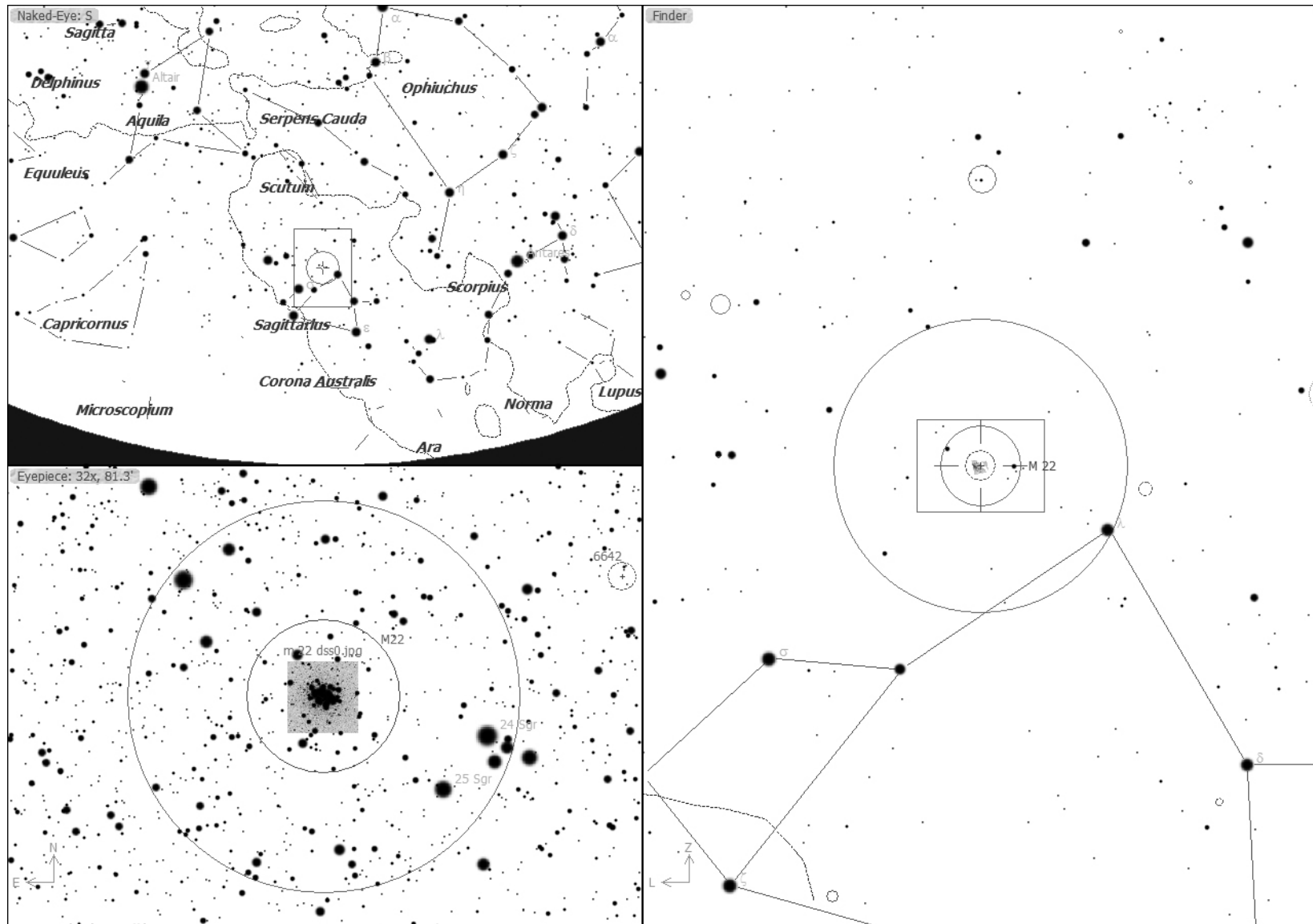
## M6 and M7



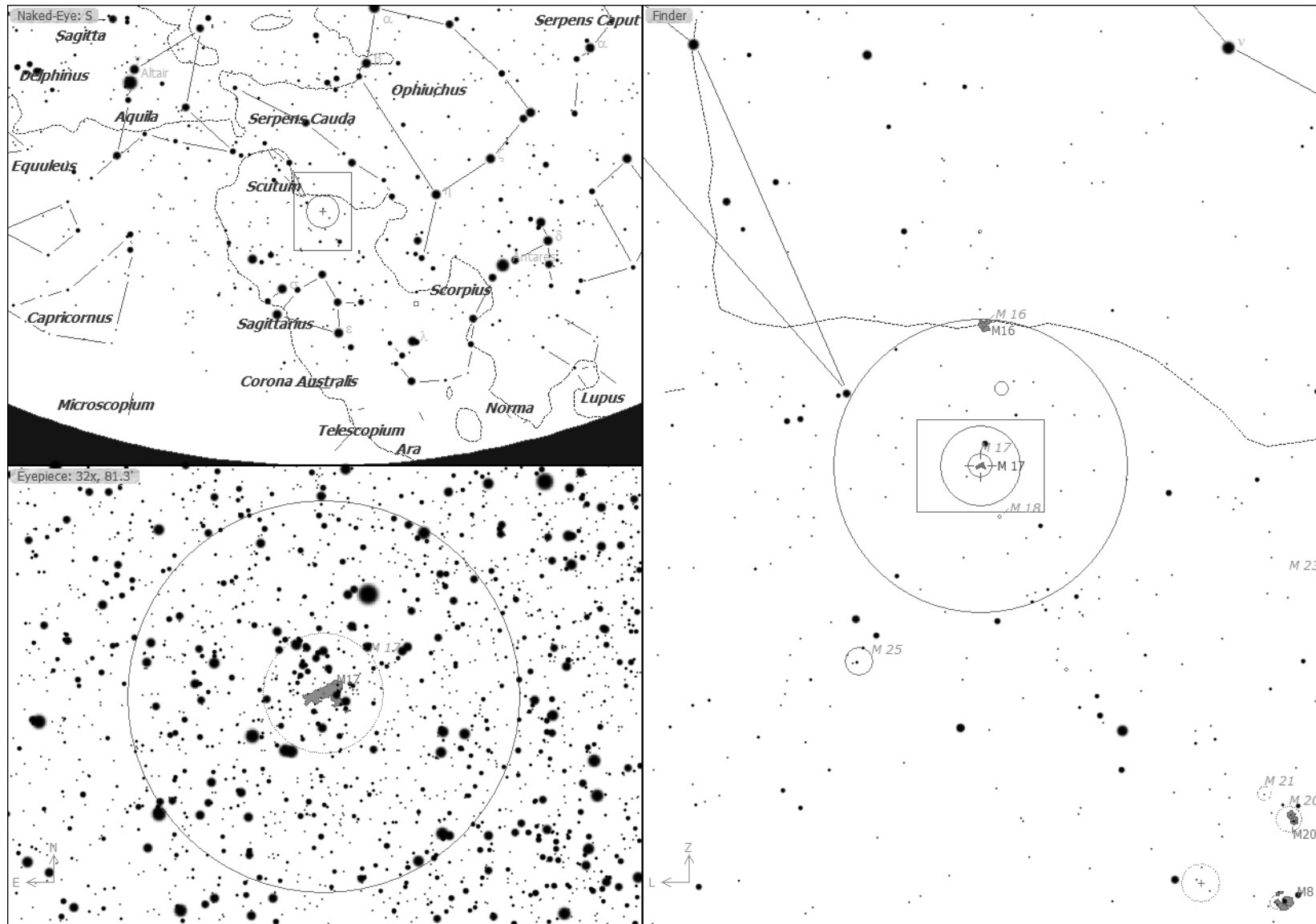
## M8 and M20



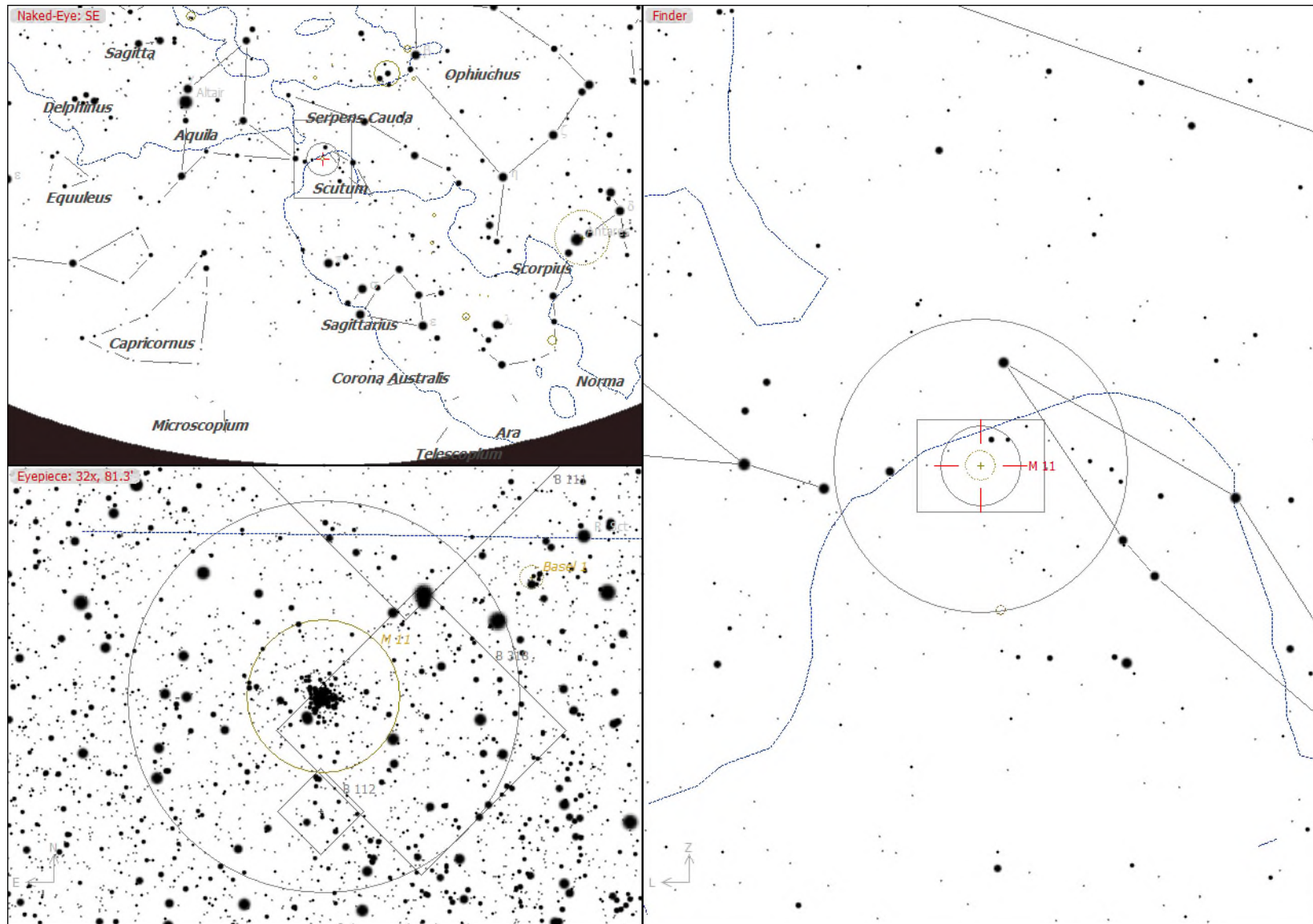
## M22



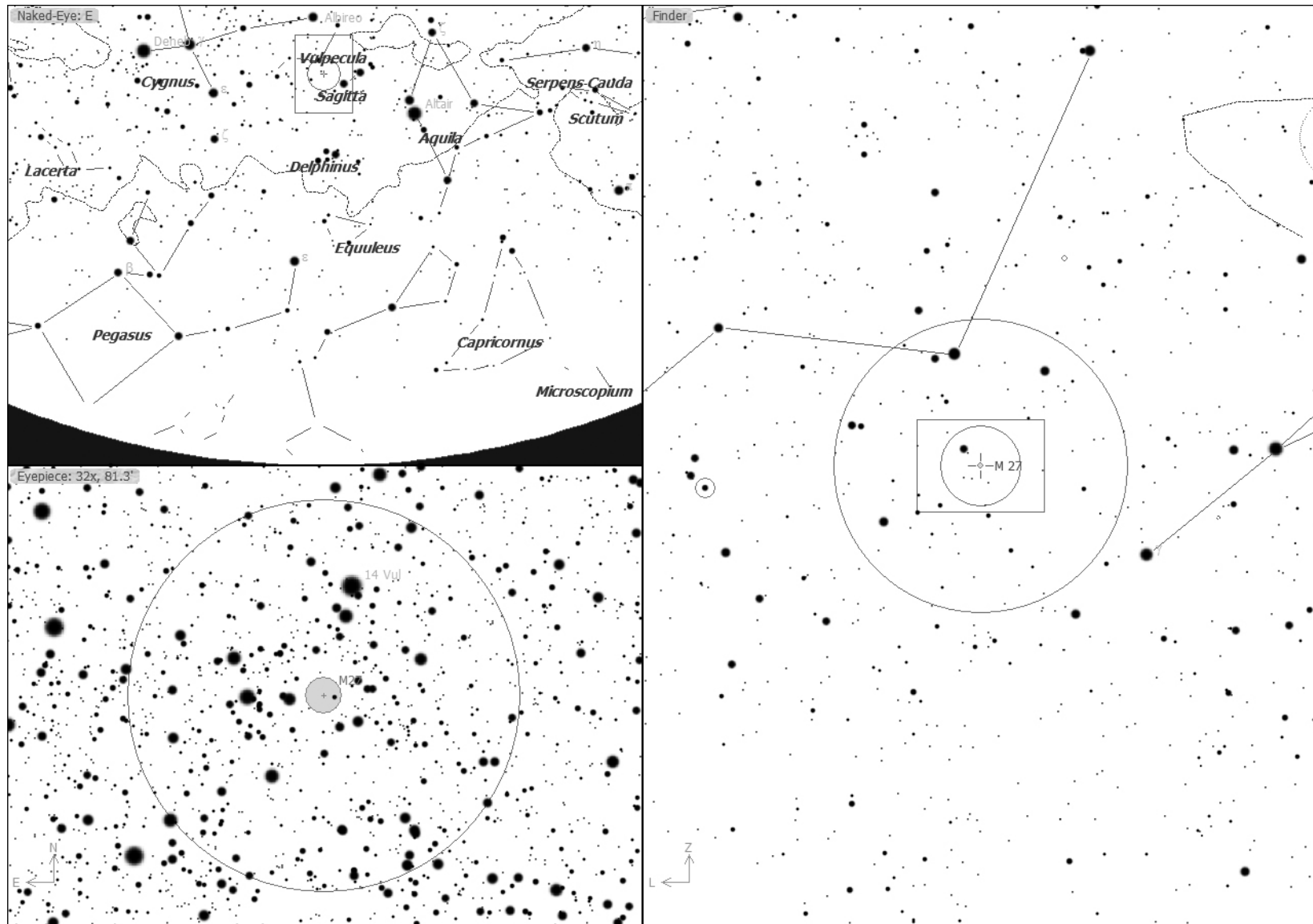
## M16 and M17



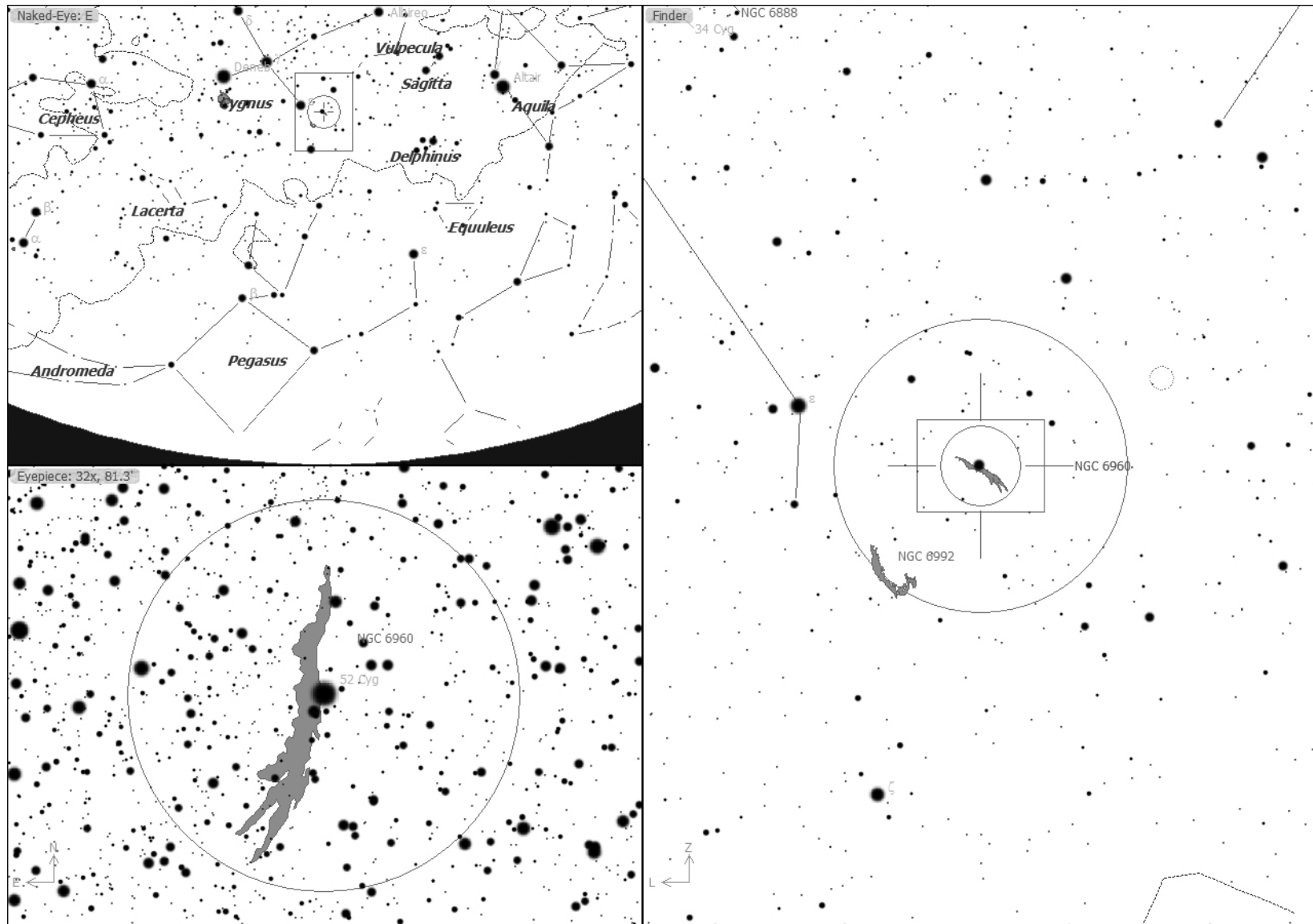
## M11



## M27

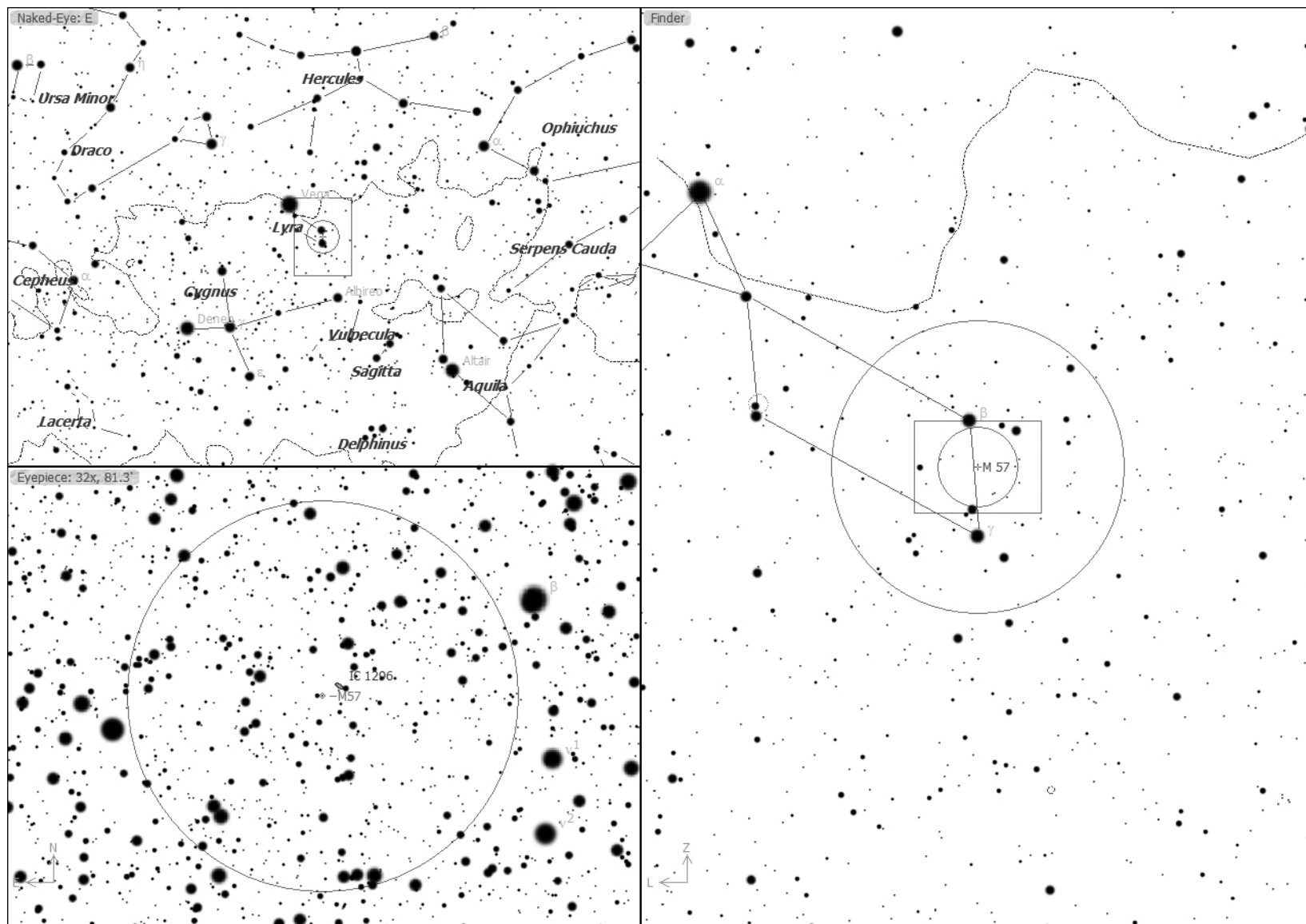


# Veil Nebula





# M 57



# M 13

